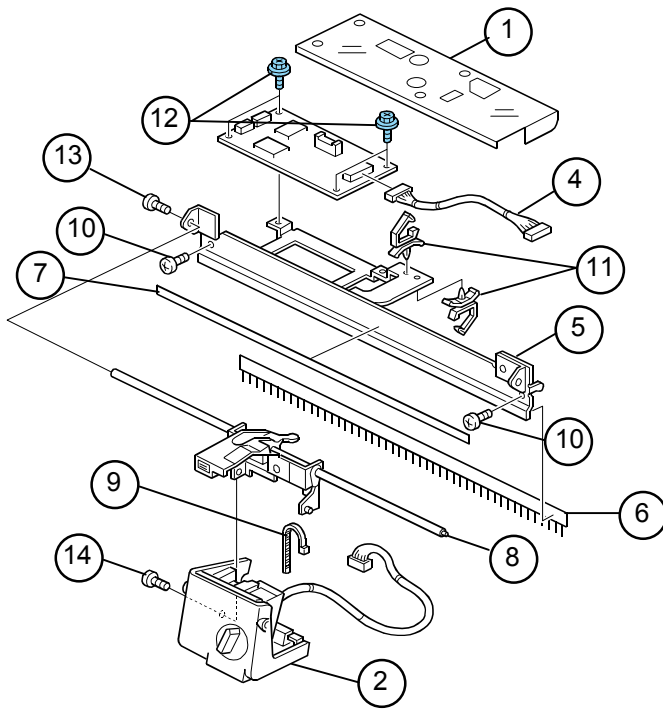


Model: Altair-SC1		Date: 28-Jul-05	No.: MG417001
Modified Article: Endorser Unit Type B		Prepared by: Yuji Urushihara	
From: 1st Tech. Support Sec. Service Support Dept.			
Reason for Modification:	<input checked="" type="checkbox"/> Parts catalog correction	<input type="checkbox"/> Vendor change	<input type="checkbox"/> Other
	<input type="checkbox"/> To facilitate assembly	<input type="checkbox"/> To improve reliability	<input type="checkbox"/> To meet standards
	<input type="checkbox"/> Part standardization	<input type="checkbox"/> Product Safety	( )

The following parts are for Endorser Unit Type B. Please add this information to the Altair-SC a/b P/C.



Old part number	New part number	Description	Q'ty	Int	Page	Index	Note
	G8271005	SHEET:COVER:BASE	0-1			1	
	G8270110	MAIN FRAME SECTION:ENDSOR	0-1			2	
	G8275250	PCB:ED:ASS'Y	0-1			3	
	G8275654	HARNESS	0-1			4	
	G8271000	COVER:EXIT:ENDSOR:ASS'Y	0-1			5	
	G8271006	DISCHARGE BRUSH:ENDSOR	0-1			6	
	G8272301	DECAL:SCALE:ENDSOR	0-1			7	
	G8271010	FRAME SECTION:ASS'Y	0-1			8	
	11050046	WIRE BINDER	0-1			9	
	G8271019	FLAT SCREW:M3X9	0-2			10	
	11050516	CLAMP:LWSM-0511	0-2			11	
	04543006Q	TAPPING SCREW::3X6	0-4			12	
	03530060N	SCREW:M3X6	0-1			13	
	52062687	STUD SCREW - M3	0-1			14	